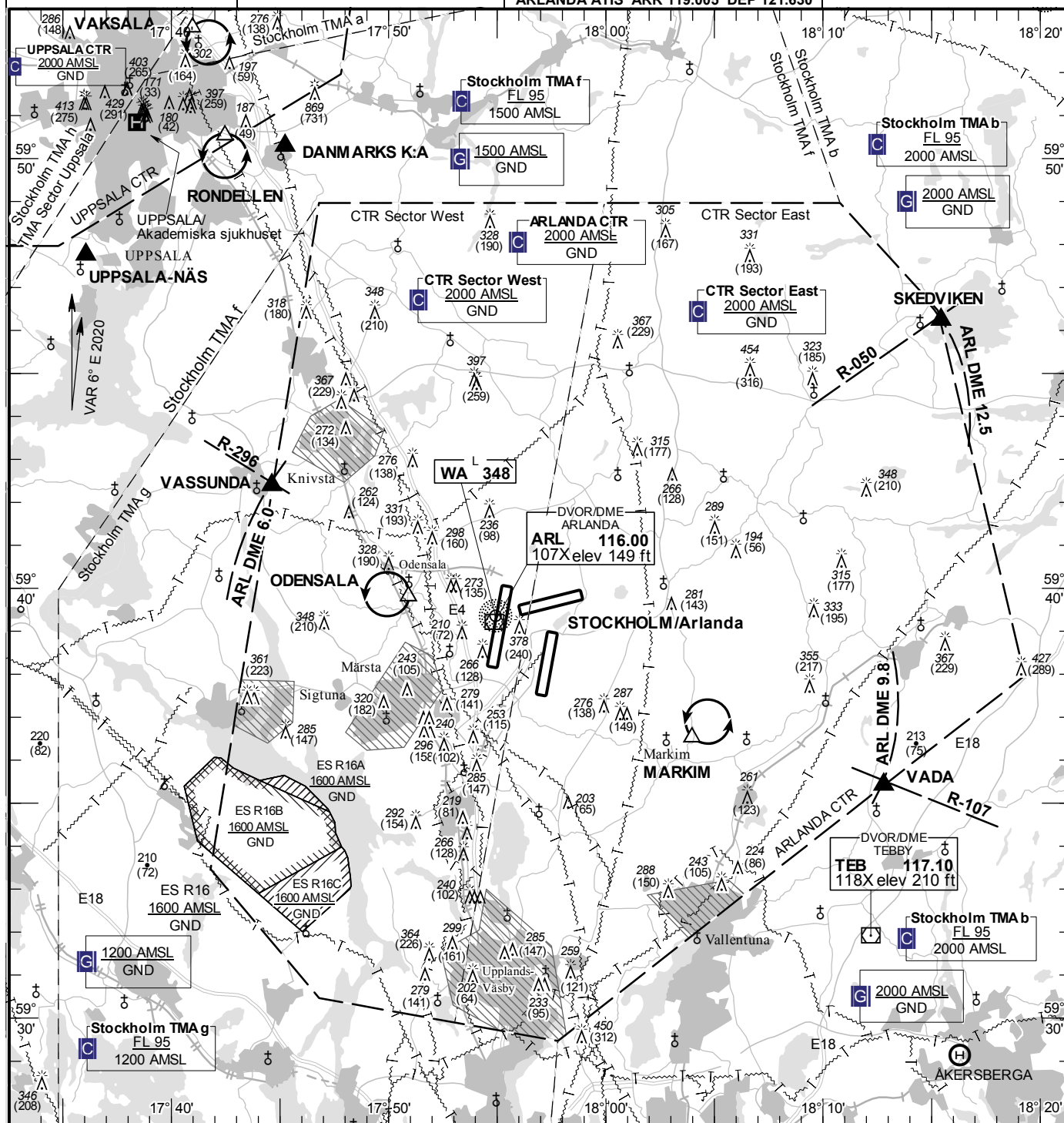


A scale bar for Figure 1. The top scale is in kilometers (km) with markings at 1, 0, 1, 2, 3, 4, and 5. The bottom scale is in nautical miles (NM) with markings at 1, 0, 1, 2, and 3. The scale is labeled 1:250000.

TA 5000 AMSL

ARLANDA ATIS ARR 119.005 DEP 121.630

STOCKHOLM/Arlanda
SWEDEN



Aircraft with Communication failure is not allowed to enter Arlanda CTR.
In case of Communication failure proceed to aerodrome outside Arlanda CTR.

Note: Noise sensitive area should be avoided below 2000 ft AMSL

See GEN 2.3

RWY NR	THR ELEV	PAPI (MEHT)
01L	98.6 ft	Left/3.00° (61 ft)
19R	118.2 ft	Left/3.00° (56 ft)
01R	138.0 ft	Right/3.00° (57 ft)
19L	98.9 ft	Left/3.00° (57 ft)
08	108 ft	Left/3.00° (56 ft)
26	124.8 ft	Left/3.00° (60 ft)

SKEDVIKEN	594614N 0181526E
VADA	593525N 0181248E
VASSUNDA	594223N 0174438E

ODENSALA: Hold at Odensala Church, west of
point 593948N 0175054E

MARKIM: Hold at Markim Church, northeast of
point 593630N 0180359E